





## Forward Looking Advisory

This presentation may include certain “forward-looking statements”. All statements other than statements of historical fact, included herein, including, without limitation, statements regarding future plans and objectives of the Company, are forward-looking statements that involve various risks, assumptions, estimates and uncertainties. These statements reflect the current internal projections, expectations or beliefs of the Company and are based on information currently available to the Company. There can be no assurance that such statements will prove to be accurate, and actual results and future events could differ materially from those anticipated in such statements. All of the forward looking statements contained in this presentation are qualified by these cautionary statements and the risk factors described above. Furthermore, all such statements are made of the date this presentation is given and the Company assumes no obligation to update or revise these statements.

An investment in the Company is speculative due to the nature of the Company's business. The ability of the Company to carry out its growth initiatives as described in this confidential PowerPoint presentation is dependant on the Company obtaining additional capital. There is no assurance that the Company will be able to successfully raise the capital required or to complete each of the growth initiatives described. Investors must rely upon the ability, expertise, judgment, discretion, integrity and good faith of the management of the Company. Unless indicated otherwise, all dollar amounts herein are in Canadian dollars.

# Capital Markets Overview

Listing: LEA – TSX Venture  
 Listed: November 2003  
 52 week high / low: \$1.45 / \$0.13  
 Insider ownership: 20%  
 Average trading volume: 150,000 shares/day

## Market Capitalization

*All figures in C\$ millions unless otherwise noted*

Share Price (C\$) <sup>(1)</sup>	\$0.90
Shares Outstanding - Basic (MM)	19.5
Shares Outstanding - Fully Diluted	25.4
<b>Market Capitalization - Basic</b>	<b>\$17</b>
<b>Market Capitalization - F/D</b>	<b>\$23</b>

(1) Stock Price updated as of June 24, 2011.



***Rod Hauser – Chairman, President and CEO***

- More than 35 years of experience in the oil and gas industry
- Co-founder, President and Director of Alpine Oil Services until sale to Weatherford in 2000

***Graham Reid – Vice President Finance and CFO***

- Former CFO of Norex Exploration Services and Controller of Ryan Energy Technologies, CA charterholder

***Jason Krueger – Executive Vice President & Director***

- Former President of Redwood Capital Corporation, CFA charterholder

***Gord Harris – Director***

- VP and COO of One Earth Oil and Gas, MBA, member of APPEGA

***Stephen Austin – Director***

- President of Energy Accounting Services Inc.
- More than 30 years of experience advising on corporate reporting and corporate governance, CA charterholder
- Audit committee chair

***M. Rida El Alem – Director***

- More than 40 years of experience as an international energy consultant, former senior economist with OPEC

***Rick Skeith – Director***

- More than 30 years of experience as solicitor advising public and private corporations

***Leader Energy Services Ltd. is a dynamic and innovative oilfield services company providing Class 3 coiled tubing, nitrogen and fluid pumping services, with a focus on northwest Alberta and northeast BC.***

Three service lines focused on the completion/production phases of oil and gas wells.

Calgary head office; Grande Prairie, AB operations base.

Majority of services performed on wells deeper than 3,000 meters total measured depth; growing demand for coiled tubing services on horizontal wells.



## Well Stimulation: Coiled Tubing Services

Will perform 1,750 to 2,000 coiled tubing, nitrogen and fluid pumping jobs in 2011.

Services include:

- clean-outs

- plug retrieval

- drill-outs

- perforating and fluid displacement.

Modern fleet of 6 coiled tubing units providing 1-1/4" to 2-3/8" o.d. coil to depths up to 5,500 meters; 1 new unit to be constructed in 2011 and 4 new units in 2012.



Unconventional resource development in areas such as Montney, Cardium and Horn River is driving demand for larger diameter coil.

Nitrogen units work with coiled tubing operations and also on standalone jobs without coiled tubing units.

Flameless process offers a safe and efficient way of vaporizing liquid nitrogen.

Nitrogen is used in numerous well stimulation and workover operations over the life of a well including well blow-downs, foam cement jobs and CT purges.

7 nitrogen units in fleet; will expand to 8 units in 2012.



High pressure pumping units capable of pumping fluids to activate downhole motors used in drilling out composite plugs in horizontal sections, chemical injections, scale cleanouts, and well turnovers.

Units are designed specifically for coiled tubing applications.

Additional units to be added to fleet in 2011 and 2012.



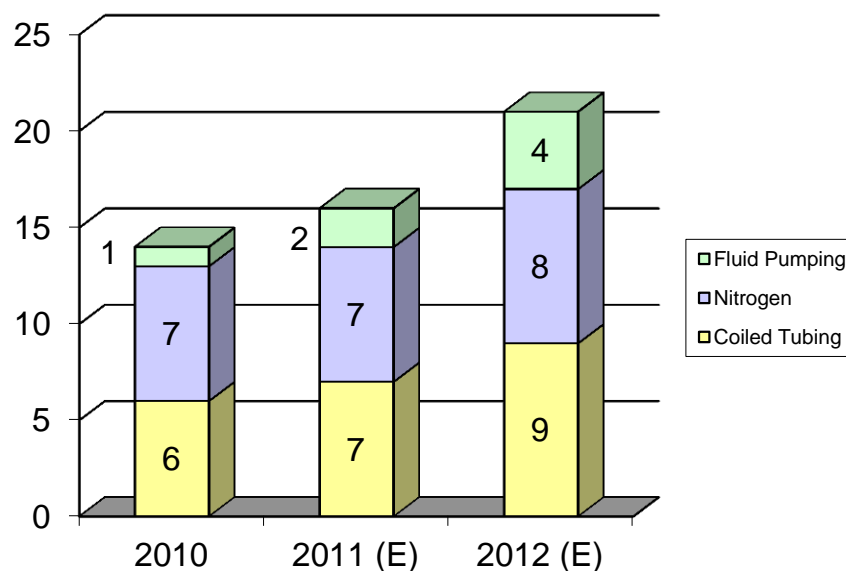
Deeper, horizontal wells driving the need for larger diameter coil which will increase field profits; gross revenue per man/day of \$4,000 to \$5,000.

Customer base is growing, with increasing demand for Leader's services; will work for more than 90 companies in 2011.

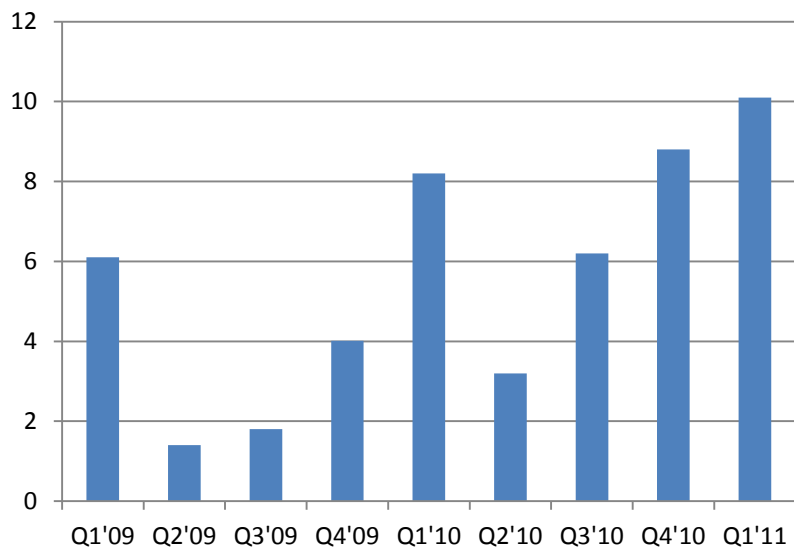
Long term fundamentals for oil and liquids-rich natural gas projects have improved substantially.

Modest capex program of \$4 million planned for 2011 and up to \$6 million for 2012; 2012 revenue expected to increase 30% to 45% with an EBITDA margin of 30% to 33%.

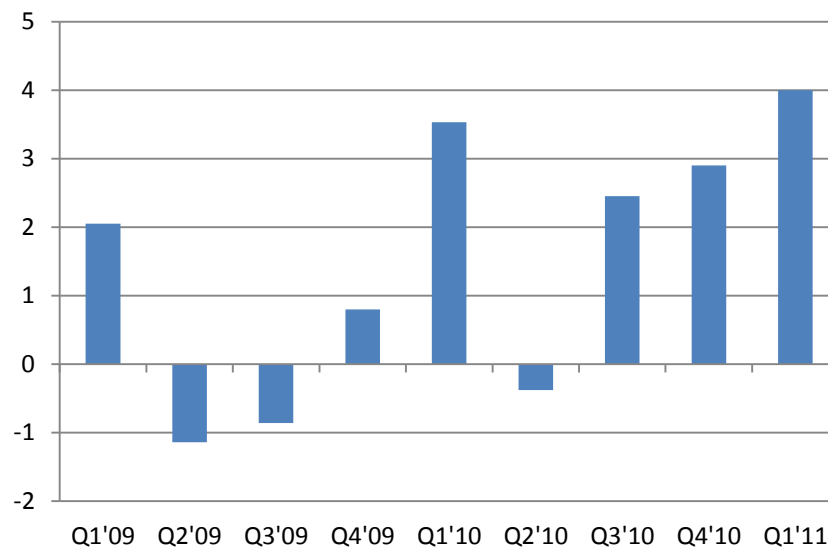
**Fleet Growth (# Units)**



**Quarterly Revenue**  
(\$ Millions)



**Quarterly EBITDA\***  
(\$ Millions)



\* From continuing operations. EBITDA figures prior to Q1'11 were reported under Canadian GAAP.

Leader had \$34 million of cumulative non-capital loss carry-forwards for Canadian income tax purposes at December 2010, which are available to reduce taxable income in future years.

## **Head Office**

Suite 700, 706 – 7<sup>th</sup> Avenue SW  
Calgary, Alberta T2P 0Z1

Tel: (403) 265-5400

Fax: (403) 263-6789

**[www.leaderenergy.com](http://www.leaderenergy.com)**

